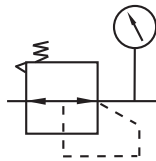
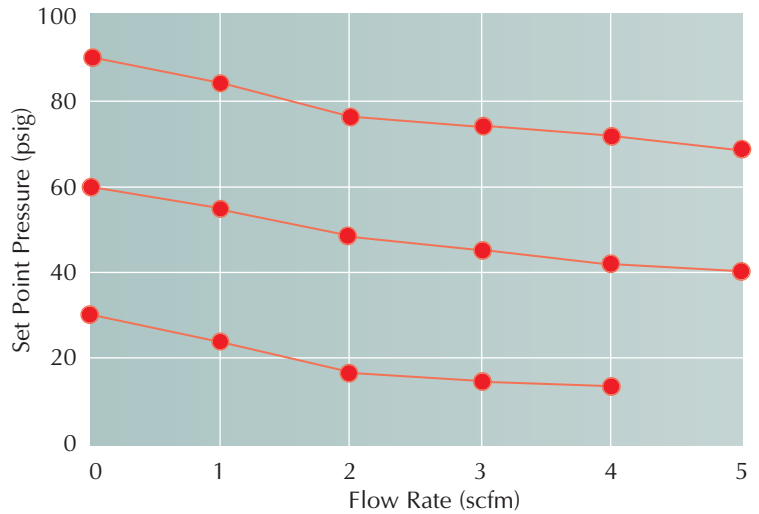


## Flow Rate vs. Set Point Pressure @ 100 psig Supply Pressure

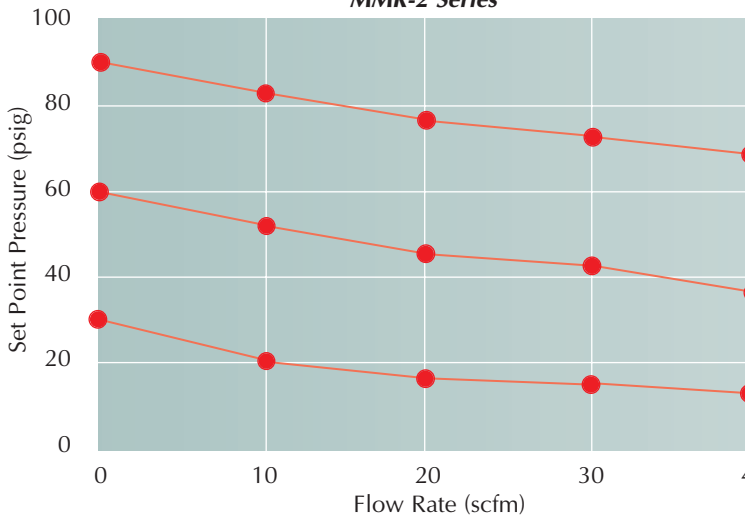
- Find the required flow rate in the graphs below.
- Determine the desired set point pressure.
- With a suggested pressure drop of <15 psig, determine which Regulator size provides the required flow rate.



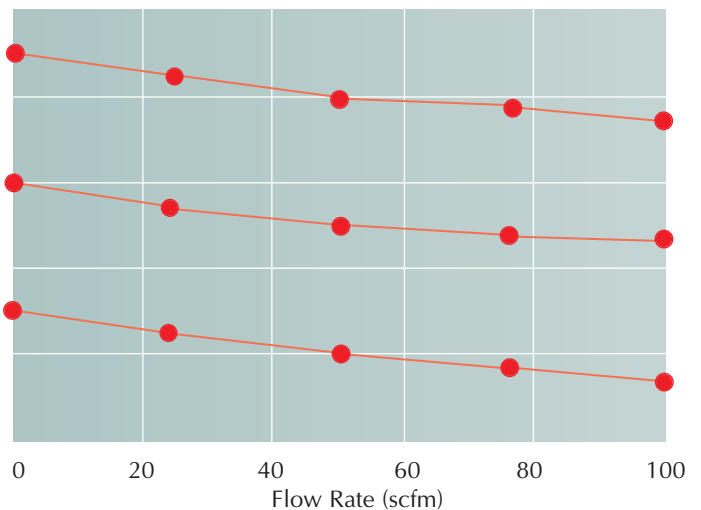
**MMR-1 Series**



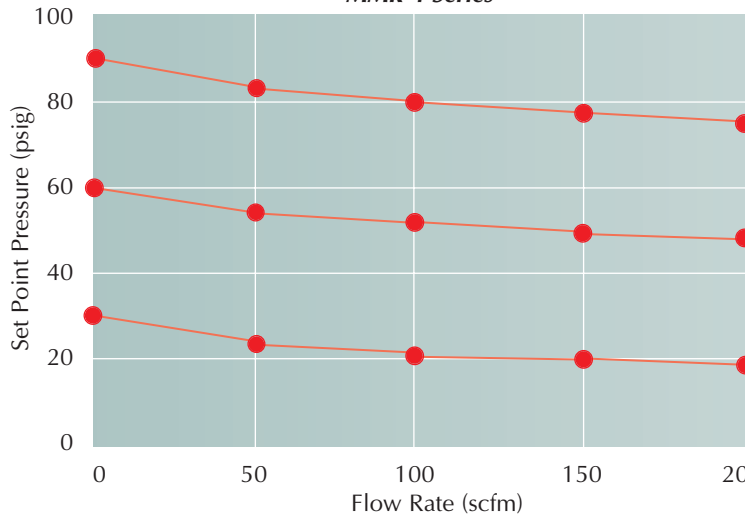
**MMR-2 Series**



**MMR-3 Series**



**MMR-4 Series**



**MMR-5 Series**

